

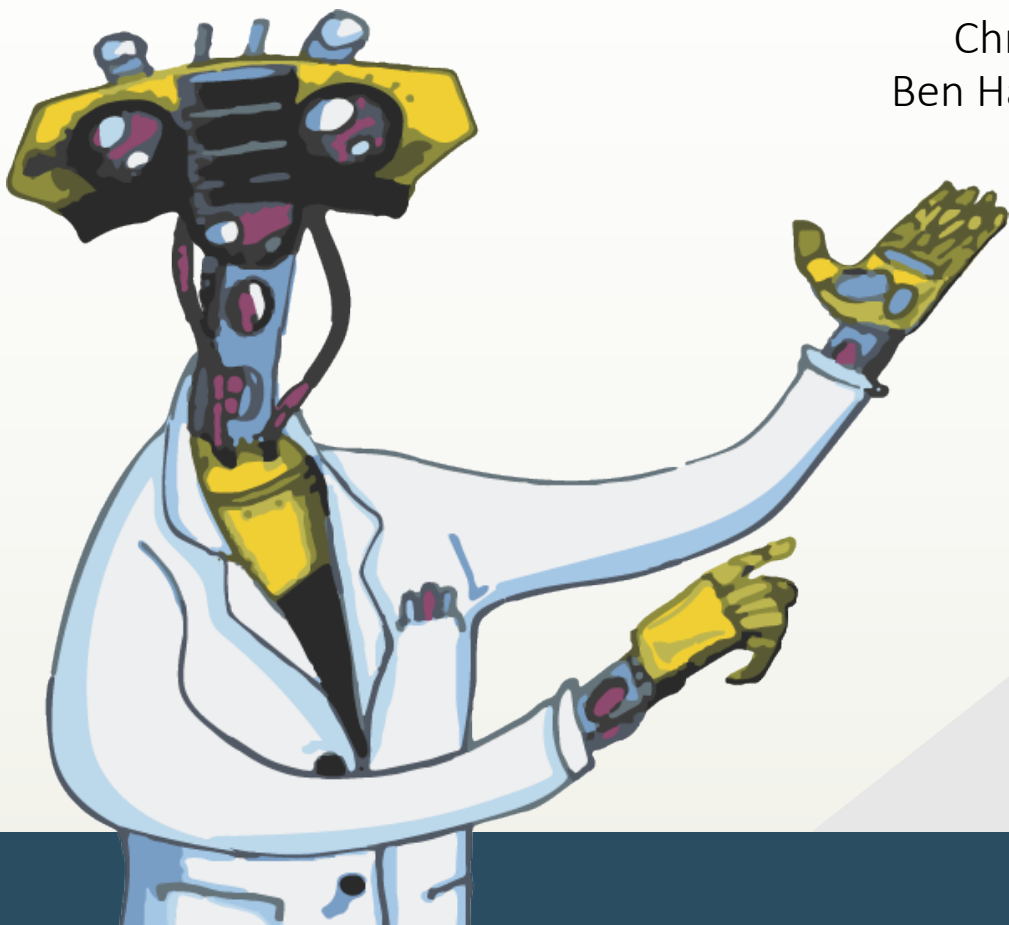


Multiple driver research workshop

Sapporo, Japan

18 April 2024

Christopher Cornwall (Victoria University of Wellington, New Zealand)
Ben Harvey (Shimoda Marine Research Center, University of Tsukuba, Japan)
Denisa Berbece (Victoria University of Wellington, New Zealand)
Holly Koch (Victoria University of Wellington, New Zealand)



Multiple driver research workshop

- Experiments assessing the impacts of multiple drivers of climate change are complex, hence the development of this workshop and associated tools
- Suitable for students, Early career researchers, and scientists new to the field of climate change research and experimental design in general
- We go over experimental design, question development, and trade-offs between logistical constraints
- The day will consist of presentations from the workshop organisers as well as group discussions and problem solving

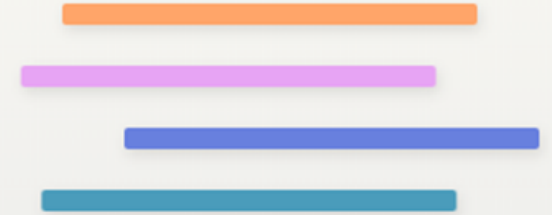
Day timeline:

9:00 – 9:25	Welcome and introduction
9:25 – 9:40	Introduction
9:40 – 10:25	Step 1: Define the research question
10:25 – 10:45	<i>Coffee and tea</i>
10:45 – 11:30	Step 2: Identify the biological traits and responses
11:30 – 12:30	Step 3: Identify the drivers
12:30 – 1:30	<i>Lunch</i>
1:30 – 3:00	Step 4: Experimental design and statistical analysis
3:00 – 3:45	Step 5: Resources
3:45 – 4:15	<i>Coffee and Tea</i>
4:15 – 4:50	Introduction to the MEDDLE simulator
4:50 – 5:00	Workshop close



MEDDLE

A GUIDE TO RUNNING BEST PRACTICE
EXPERIMENTS IN OCEAN RESEARCH



JUMP TO



LEARNING
MATERIAL



DECISION
SUPPORT TOOL



MEDDLE
SIMULATOR



BROWSE VIDEO
GALLERY



DOWNLOAD
HANDBOOK



TEACHING
RESOURCES

<https://meddle-scor149.org/simulator/#introduction>